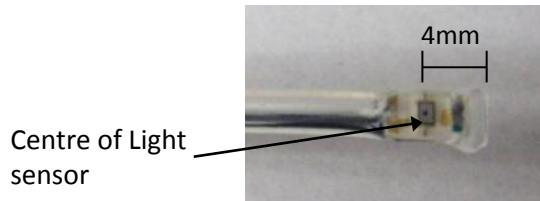




Specifying Geolocator Stalks

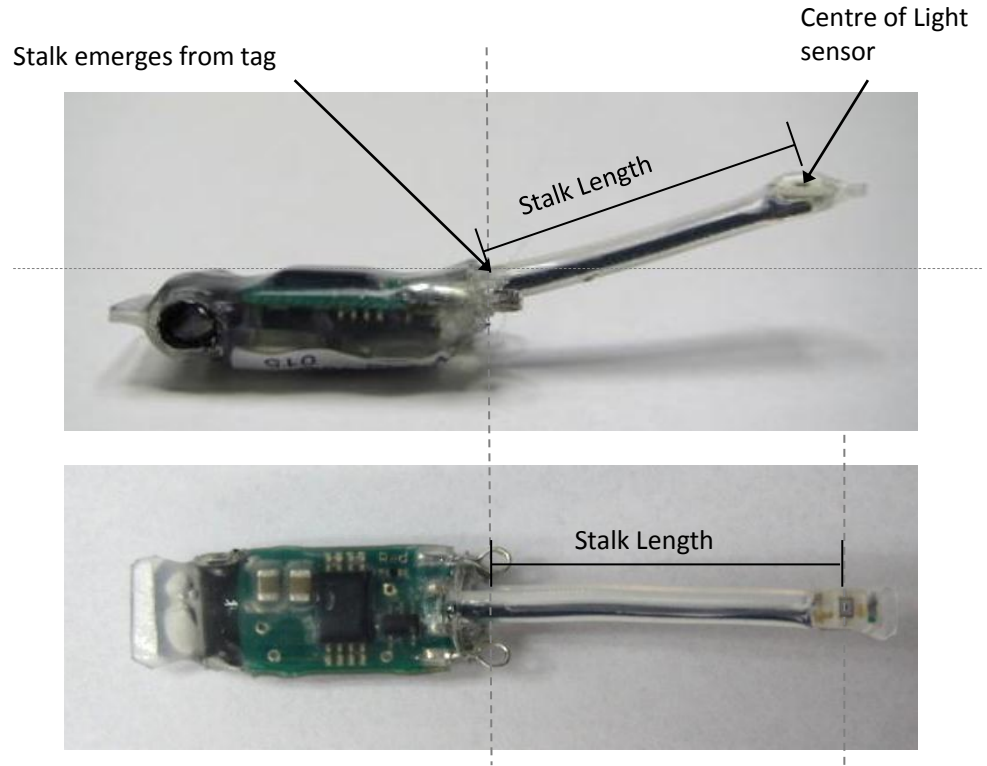
Stalk Length

Geolocator stalks are measured from the point at which they emerge from the tag, to the centre of the light sensor.

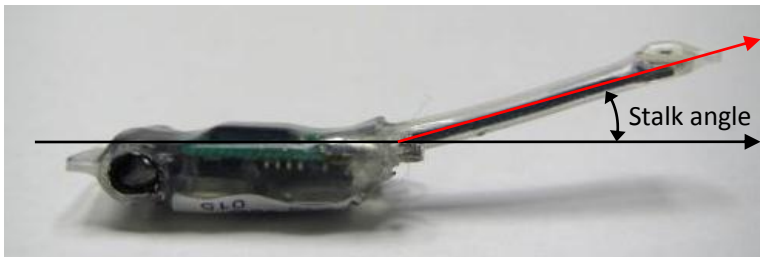


The stalk extends approximately 4 mm beyond the light sensor for encapsulation. This should be taken into account when considering the effects of drag.

The tolerance on stalk length is $\pm 1.5\text{mm}$.



Stalk Angle



The Stalk angle is the angle of the stalk relative to the horizontal plane.